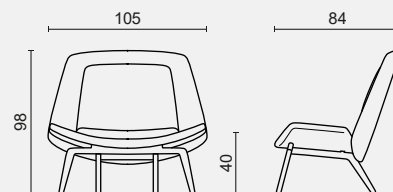


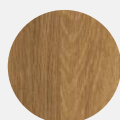
NORDIC SOFÀ



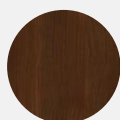
Box gros weight 48,7 kg – Box Vol. 1,06 m³

Armchair – mod. 1403S

Version:	Monocolour: shell and cushions upholstered in the same colour. Bicolour: colour 1 on seat and backrest shell, colour 2 on seat cushion and backrest panel.
Structure:	Inner frame of seat and backrest in 20 mm th. plywood. Seat and backrest padded with fire retardant polyurethane foam, 65 kg/mc density, 15 mm th. Inner frame of seat and backrest cushion in 4 mm th. plywood. Backrest cushion padded with fire retardant polyurethane foam, 25-40 kg/mc density, 60 mm th. Seat cushion fire retardant padding density 40 kg/mc, 70 mm th.
Base:	BS250 – 4-legged varnished solid beech wood base.

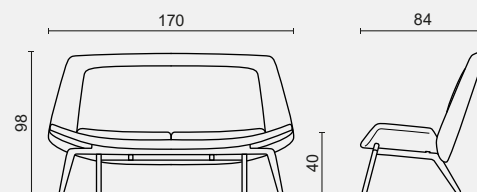


D - natural



F - tobacco

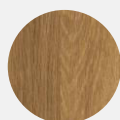
NORDIC SOFÀ



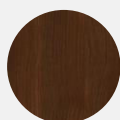
Box gros weight 77 kg – Box Vol. 1,73 m³

2 seater sofa – mod. 1502S

Version:	Monocolour: shell and cushions upholstered in the same colour. Bicolour: colour 1 on seat and backrest shell, colour 2 on seat cushion and backrest panel.
Structure:	Inner frame of seat and backrest in 20 mm th. plywood. Seat and backrest padded with fire retardant polyurethane foam, 65 kg/mc density, 15 mm th. Inner frame of seat and backrest cushion in 4 mm th. plywood. Backrest cushion padded with fire retardant polyurethane foam, 25-40 kg/mc density, 60 mm th. Seat cushion fire retardant padding density 40 kg/mc, 70 mm th.
Base :	BS252 – 4-legged varnished solid beech wood base.

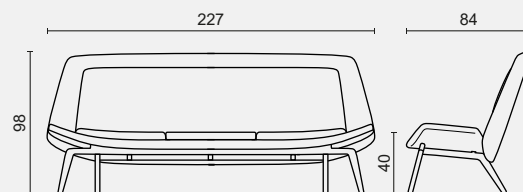


D - natural



F - tobacco

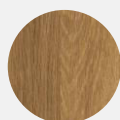
NORDIC SOFÀ



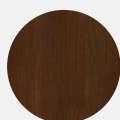
Box gros weight 95,7 kg – Box Vol. 2,06 m³

3 seater sofa– mod. 1508S

Version:	Monocolour: shell and cushions upholstered in the same colour. Bicolour: colour 1 on seat and backrest shell, colour 2 on seat cushion and backrest panel.
Structure:	Inner frame of seat and backrest in 20 mm th. plywood. Seat and backrest padded with fire retardant polyurethane foam, 65 kg/mc density, 15 mm th. Inner frame of seat and backrest cushion in 4 mm th. plywood. Backrest cushion padded with fire retardant polyurethane foam, 25-40 kg/mc density, 60 mm th. Seat cushion fire retardant padding density 40 kg/mc, 70 mm th.
Base :	BS254 – 4-legged varnished solid beech wood base.

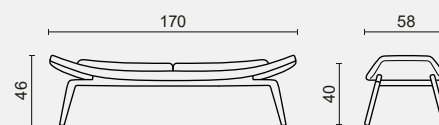


D - natural



F - tobacco

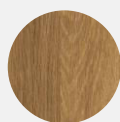
NORDIC SOFÀ



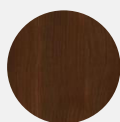
Box gross weight 35 kg – Box Vol. 0,48 m³

2 seater bench – mod. 1032S

Version:	Monocolour: seat shell and cushion with same upholstering colour. Bicolour: colour 1 on seat shell, colour 2 on seat cushion.
Structure:	Seat inner frame in 20 mm th. plywood. Seat shell padded with fire retardant polyurethane foam, 65 kg/mc density, 15 mm th.. Seat cushion inner frame in 4 mm th. plywood. Seat cushion fire retardant padding density 40 kg/mc, 70 mm th.
Base :	BS256 – 4-legged varnished solid beech wood base.

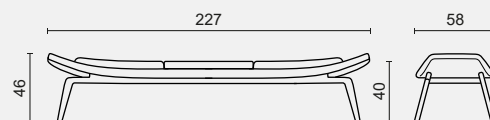
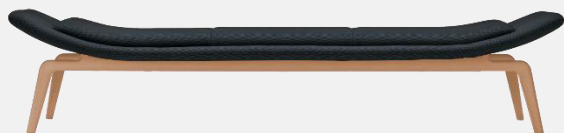


D - natural



F - tobacco

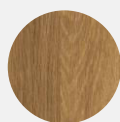
NORDIC SOFÀ



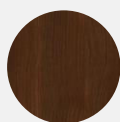
Box gross weight 52,4 kg – Box Vol. 0,64 m³

3 seater bench – mod. 1033S

Version:	Monocolour: seat shell and cushion with same upholstering colour. Bicolour: colour 1 on seat shell, colour 2 on seat cushion.
Structure:	Seat inner frame in 20 mm th. plywood. Seat shell padded with fire retardant polyurethane foam, 65 kg/mc density, 15 mm th.. Seat cushion inner frame in 4 mm th. plywood. Seat cushion fire retardant padding density 40 kg/mc, 70 mm th.
Base :	BS258 – 4-legged varnished solid beech wood base.



D - natural



F - tobacco